

# Welcome to our Y10 Exam Preparation Evening

ARCHBISHOP  
SENTAMU  
ACADEMY  
CHURCH OF ENGLAND



**Hope** SENTAMU  
LEARNING TRUST

## Outline of event:

- **Welcome:** Mr Eley
- **Mr Chris Reynolds** - Principal
- **Exam Expectations** - Mrs Kristina Hill, Vice Principal for Quality of Education
- **Revision Tips and Advice (including GCSE Bitesize app)** - Mr Hill
- **Key Dates**

Staff and members of the Senior Leadership Team will also be around to answer any questions or queries you may have.



# Mr Reynolds - Principal

ARCHBISHOP  
SENTAMU  
ACADEMY  
CHURCH OF ENGLAND



**Hope** SENTAMU  
LEARNING TRUST

# Vision and Values

To lead the best life possible.

Our distinctively Christian vision is that everyone will be able to lead the best life possible, now and in the future. It is underpinned by the words of Jesus in John 10:10 which says, “**I have come that you may have life in all its fullness.**”

- **Respect** - Strong and positive relationships, where all are included and valued, and can discover their unique worth.
- **Community** - Positive relationships, within and beyond the academy. Serving others, in the classroom and beyond, is second nature.
- **Courage** - Where everyone can build perseverance and resilience in a culture where confidence can grow and mistakes become part of the learning process.
- **Wisdom** - We want our academy to be a place where thoughtfulness, reflection and acquisition of knowledge is expected of everyone, regardless of their starting point.





# What do you want to achieve?

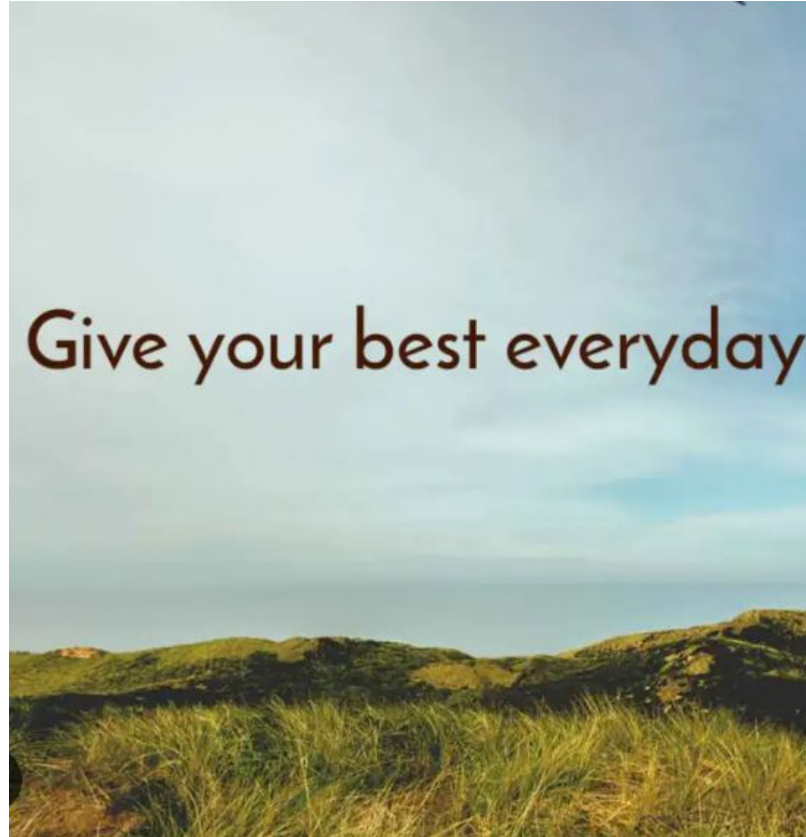


# How will we get there?

Working together



# What I expect from you







**PROUD**

**Hope** SENTAMU  
LEARNING TRUST

# Mrs Hill - Exams Expectations and Procedures

ARCHBISHOP  
SENTAMU  
ACADEMY  
CHURCH OF ENGLAND



**Hope** SENTAMU  
LEARNING TRUST

# Mock Exams - How Will the Process Work

- Mocks will run from 17th to 28th June
- Students will sit them in the hall/ assigned rooms where required
- We use invigilators as we do in the real exam series
- Students will receive an exam timetable so that they can revise and prepare
- We will move to an early lunch during the mock season (17th-28th June)
- We will practise formal dismissals into the exam hall



# Mock Exams - How Will the Process Work

- **Students will be given JCQ Assemblies on exams regulations and will be briefed on expectations and actions which may lead to disqualification in a real exam**
- **Punctuality is key: students are expected to arrive on time**
- **We will contact parents/conduct home visits if students are not attending their mock exams**



# Mock Exams - How Will the Process Work

- We are using past papers which will be marked and moderated
- We will host an official results evening before the summer
- We will use the mocks as a key progress driver in July 2024 and September 2024 and beyond
- We will work in partnership with parents to ensure that students succeed and secure the best outcomes possible, in order to live life “in its fullness”.





# Mr Hill - Revision Tips and Advice

ARCHBISHOP  
SENTAMU  
ACADEMY  
CHURCH OF ENGLAND



**Hope** SENTAMU  
LEARNING TRUST

# Revision - How can you help your child at home?

- Their own study space
- Healthy eating
- Talk with them
- Sleep
- Breaks
- Environment
- Technology
- GCSE Pod

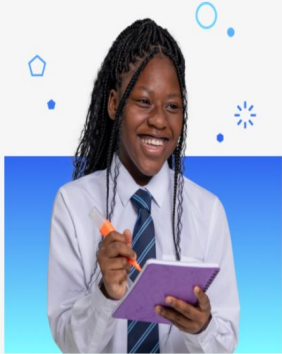


# BITESIZE



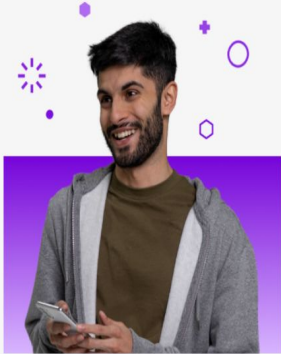
**Primary**

Age 3 to 11



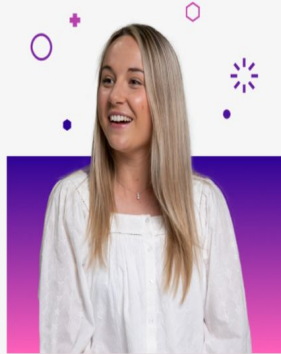
**Secondary**

Age 11 to 16



**Careers**

Skills and jobs



**Teachers**

BBC Teach

[www.bbc.co.uk/bitesize](http://www.bbc.co.uk/bitesize)



# BITESIZE

Home | Learn | Study support | Careers | Parents | Trending | My Bitesize

More

## Secondary Levels

Ages 11 to 16

### England

KS3



Year 7, 8, 9

GCSE



Year 10, 11

### Northern Ireland

KS3



Year 8, 9, 10

GCSE



Year 11, 12

### Scotland

3mh ìre



ÀS1, ÀS2, ÀS3

4mh ìre



ÀS1, ÀS2, ÀS3

3rd level



S1, S2, S3

### Wales

CA3



Blwyddyn 7, 8, 9

KS3



Year 7, 8, 9

CBC



Blwyddyn 10, 11

www.bbc.co.uk/bitesize



## Find your added subjects in My Bitesize

View your favourite subjects and get revising quicker.

[Go to My Bitesize](#)



### All GCSE subjects

These subjects may contain both Guides for students and Classroom videos for use by teachers.



Art and Design



Biology (Single Science)



Business



Chemistry (Single Science)



Combined Science



Computer Science



Design and Technology



Digital Technology (CCEA)



Drama



English Language



English Literature



French



Geography



German



History



Home Economics: Food and Nutrition (CCEA)



Hospitality (CCEA)



ICT



Irish - Learners (CCEA)



Journalism (CCEA)



Learning for Life and Work (CCEA)



Mandarin



Maths



Maths Numeracy (WJEC)



Media Studies



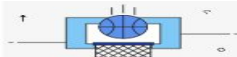
Modern Foreign Languages



Moving Image Arts (CCEA)



Music



Physical Education



Physics (Single Science)



Religious Studies



Science



Spanish



Welsh Second Language (WJEC)







# BITESIZE

## GCSE English Language

Exam board content from BBC Bitesize for students in England, Northern Ireland or Wales. Choose the exam specification that matches the one you study.

Part of [Learn & revise](#)



### Choose your exam specification

AQA

CCEA

Edexcel

Eduqas

OCR

WJEC



# BITESIZE

[Home](#) | [Learn](#) | [Study support](#) | [Careers](#) | [Parents](#) | [Trending](#) | [My Bitesize](#)

☰ More

[GCSE](#)

## English Language - Eduqas

Easy-to-understand homework and revision materials for your GCSE English Language Eduqas '9-1' studies and exams

Part of [English Language](#)

[+ Add subject to My Bitesize](#)



### Analysing fiction



ARCHBISHOP  
SENTAMU  
ACADEMY  
CHURCH OF ENGLAND



Hope SENTAMU  
LEARNING TRUST

GCSE

# English Language - Eduqas

Easy-to-understand homework and revision materials for your GCSE English Language Eduqas '9-1' studies and exams

Part of English Language

✓ **Added**

**You have added English Language - Eduqas**



Find your added subjects in [My Bitesize](#).



# GCSE POD

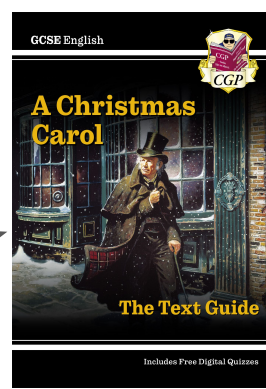
- GCSE Pod is an online revision tool
- Designed to make learning stick by watching revision Pods
- Check and challenge activities allow students to test their knowledge
- Website: [www.gcsepod.com](http://www.gcsepod.com)
- Login: Username - johnfrazer (use the student's first and last name)  
Password - ASA123
- Please see Mrs Stephenson if there are any issues



# English

Miss O'Sullivan and Mrs Kennedy  
Directors of English





OXFORD SCHOOL SHAKESPEARE

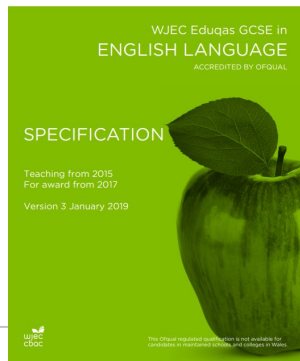


MACBETH



Hope SENTAMU  
LEARNING TRUST

Power and Conflict: 15  
poems + unseen



## Component 1 : Fiction

Reading

Writing

## Component 2 : Non-fiction

Reading

Writing



# Walking Talking Mocks

- **Students are taken to the Gym where they will complete a 'Walking Talking Mock'**
- **Opportunity to experience what the exams will entail and be guided by expert teachers**
- **There are six 'WTMs' scheduled throughout the year**
- **Students will practise these methods during lesson time**



# *How else can I support my child to revise for English?*

- Get them READING
- Encourage them to attend SPS and any revision sessions
- Use the packs from this evening
- Log into GCSE Pod
- Help them to make quote cards/revision aids at home
- Encourage them to speak to their English teacher for any further support



# Maths

Mr Wort

Director of Learning Maths

# Practising

# ~~Revising Maths~~

- The best way to revise Maths is by doing practice questions
  - What should I practise?
  - How should I practise?
  - When should I practise?





# What should I practise?

- Use mathswatch
  - Achieving Grades 1/2/3
  - Aiming for Grades 4+
  - Focus on material in the revision guide
- Mock papers
  - Designed from the revision lists
  - Practise real exam questions



# What should I practise?

## HIGHER - example

### Paper 1

	Ques	Topic	Marks	Mathswatch clip
11 marks for Grade 3	1	Written division with decimals	3	67
	2	Operations with fractions	3	71/73/74
	3	Surface area and volume of cuboids	4	114/115
	4	Frequency polygons	2	65
16 marks for Grade 4	5	Venn diagrams	5	127/185
	6	Scatter graphs	3	129
27 marks for Grade 5	7	Reverse percentage problems	2	110
	8	Pressure/Force/Area/Volume	3	119/142



# What should I practise?

## FOUNDATION - example

### Paper 3

	Ques	Topic	Marks	Mathswatch clip
11 marks for a Grade 1	1	Place value	1	1
	2	Fraction as a percentage	1	85
	3	Simplify expressions	1	33
	4	Metric conversion	1	112
	5	Ordering integers	1	2
	6	Perimeter and area by counting	2	52
	7	Probability	3	14/59
	8	Types of quadrilateral and 3D shapes	2	9/43
24 marks for a Grade 2	9	Mean average and the range	3	62
	9	Bar charts	3	15
	10	Calculations with time	4	6
	11	Function machines	3	36



# How should I practise?

- In silence..
- Independently..



# When should I practise?

- As often as you can
- Split your time into designated periods.
- How long does it take to complete a task?



# Science

Miss Angell

Director of Learning - Science



# Revise SCIENCE



# Revise SCIENCE

4.1 Cell Biology  
4.2 Organisation  
4.3 Infection & Response  
4.4 Bioenergetics

**4.5 Homeostasis**  
**4.6 Inheritance, variation  
and evolution**  
**4.7 Ecology**

5.1 Atomic Structure  
5.2 Bonding  
5.3 Quantitative  
Chemistry  
5.4 Chemical changes  
5.5 Energy changes

**5.6 Rates of reaction**  
**5.7 Organic Chemistry**  
**5.8 Chemical analysis**  
**5.9 Chemistry of the  
atmosphere**  
**5.10 Using Resources**

6.1 Energy  
6.2 Electricity  
6.3 Particle model of  
matter  
6.4 Atomic Structure

**6.5 Forces**  
**6.6 Waves**  
**6.7 Magnetism**  
**6.8 Space**

# Revise SCIENCE

## Separate Science 10X1 / 10Y1

6x 1hr 45 min papers (*3 in year 10*)  
Each paper = 100 marks / 50% of grade /  
(*100% in year 10*)

Obtain 3 GCSEs

## Combined Science

6 x 1hr 15min papers (*3 in year 10*)  
Each paper - 70 marks / 16.7% of grade (*33.3% in year 10*)

Obtain 2 GCSEs

Required practicals - 15% of marks

Maths skills:  
Biology - 10%  
Chemistry - 20%  
Physics - 30%

# Revise

# SCIENCE

## Combined HT

9-9  
9-8  
8-8  
8-7  
7-7  
7-6  
6-6  
6-5  
5-5  
5-4  
4-4  
4-3  
U

## Combined FT

5-5  
5-4  
4-4  
4-3  
3-3  
3-2  
2-2  
2-1  
1-1  
U

## Separate

9  
8  
7  
6  
5  
4  
U

# Revise SCIENCE



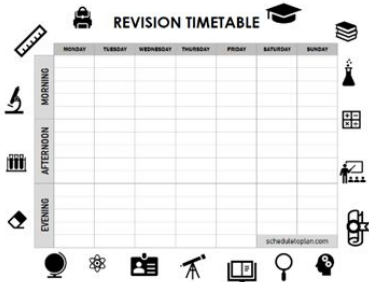
# Revise SCIENCE

WORK	BREAK
20 minutes	5 minutes
 No music	



# Revise SCIENCE

# Power Hour



# Practice

Centre Number	Candidate Number
Surname	<i>Sunnyhearing</i>
Other Names	
Candidate Signature	

**AQA** General Certificate of Secondary Education  
Higher Tier  
June 2014

**Additional Science** Unit Biology B2 *Full Papers* **BL2HP** **H**

**Biology** Unit Biology B2

Tuesday 13 May 2014 9:00 am to 10:00 am

For this paper you must have:  
 • a ruler  
 You may use a calculator.

Time allowed  
 • 1 hour

*Enjoy ☺*

For Examiner's Use	
Examiner's Initials	
Question	Mark
1	
2	
3	
4	
5	
6	
7	
TOTAL	

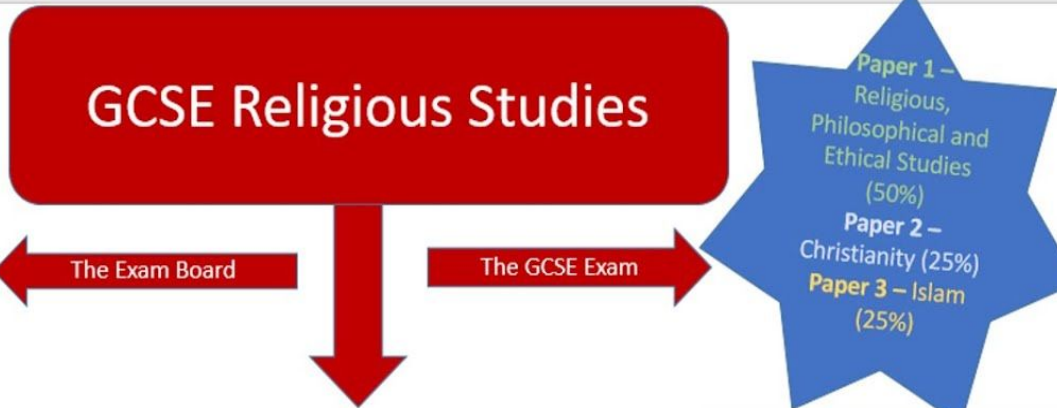
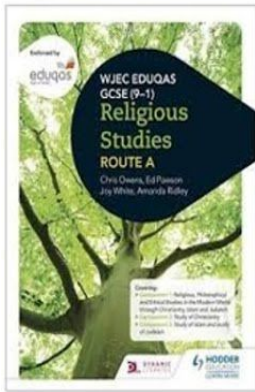
# Flashcards



**RS**

Miss Reed

Director of Learning - RS

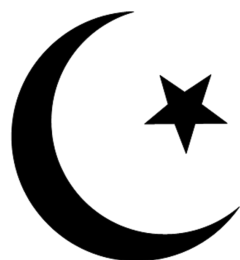
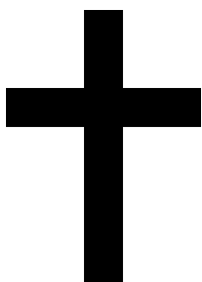


**Paper 1 – Religious, Philosophical and Ethical Studies (50%)**  
**Paper 2 – Christianity (25%)**  
**Paper 3 – Islam (25%)**

**Paper 1 – Religious, Philosophical and Ethical Studies**  
Theme 1 – Issues of Relationships  
Theme 2 – Issues of Life and Death  
Theme 3 – Issues of Good and Evil  
Theme 4 – Issues of Human Rights

**Paper 2 – Study of Christianity**  
Unit 1 - Christianity Beliefs and Teachings  
Unit 2 - Christianity Practices

**Paper 3 – Study of Islam**  
Unit 1 – Islam Beliefs and Teachings  
Unit 2 – Islam Practices



# REvision



Turn on the news feed on your phone! Religious and ethical issues are always in the news and you can use appropriate examples in your answers.

Try to make connections between the different Components you are studying.  
E.g. Sanctity of life.

Have a copy of the specification content in your file and tick off each section of content as you cover it (use this to revise too!).

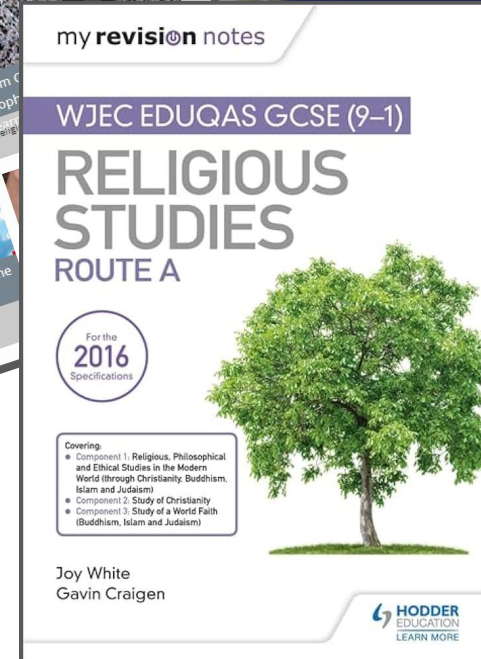
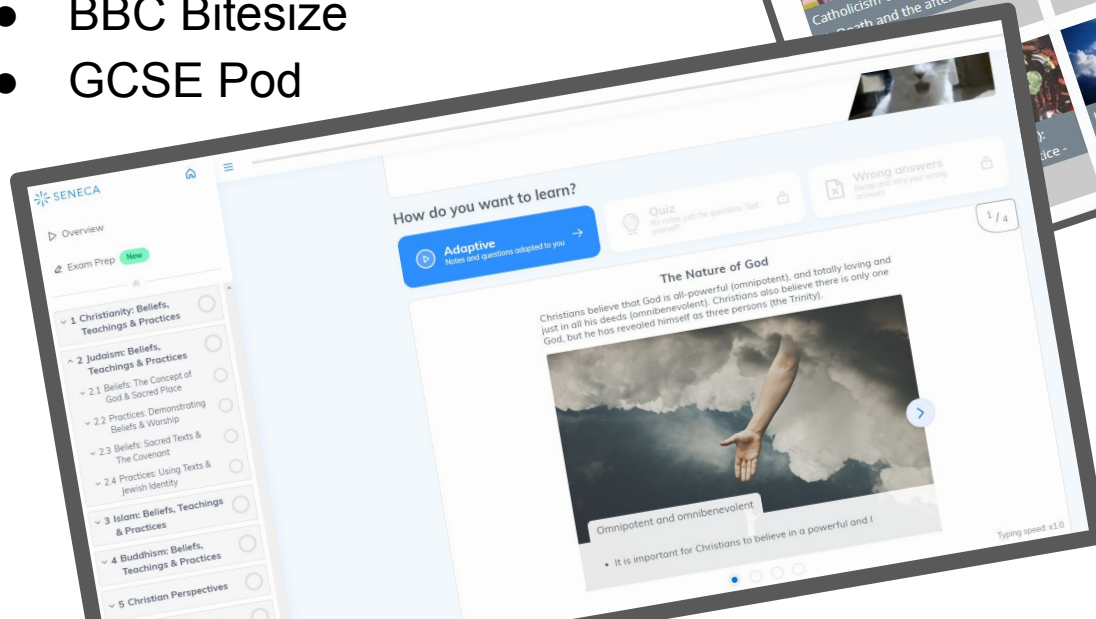
Use past paper questions and mark schemes to practise (time yourself as you answer each type of question).

In the exam, consider answering the d. questions first. If you can, get your own copy of the main text-book and/or revision guide.



# REvision

- Google classroom
- Eduqas resources
- Seneca
- BBC Bitesize
- GCSE Pod



# How will studying GCSE R.S. help me in my career?

The transferrable skills developed by studying Religious Studies are actively sought by employers. These include the ability to:

- Understand how multi-faith, multi-cultural and secular societies function
- Understand and show respect for the beliefs and teachings behind the diverse views and practices within societies
- Engage in debates in such a way that recognises the right of others to hold different views, whilst still having the informed conviction to stand by your own
- Communicate clearly and effectively in discussion and in extended writing
- Construct well informed and reasoned arguments that can be justified
- Use critical thinking skills to interrogate and question accepted norms and media output
- Links to A Level's and diplomas subjects – Philosophy, Sociology, Religious Studies, Psychology, Politics, Peace Studies, Law



# Upcoming Important Dates:

- **Y10 PPEs Mocks:** Monday 17th June - Friday 28th June
- **Work Experience:** W/B 8th July and W/B 15th July
- **PPE/Mock Results:** July 2024 (date TBC)
- **Welcome to Year 11 Parents Evening:** September 2024 (date TBC)



# Thank you for coming!

Members of the Senior Leadership Team will be around should you have any questions or queries.

Please help yourself to a tea or coffee from our refreshment station

ARCHBISHOP  
SENTAMU  
ACADEMY  
CHURCH OF ENGLAND



**Hope** SENTAMU  
LEARNING TRUST